

Memoranda

SIC Palmyra Island

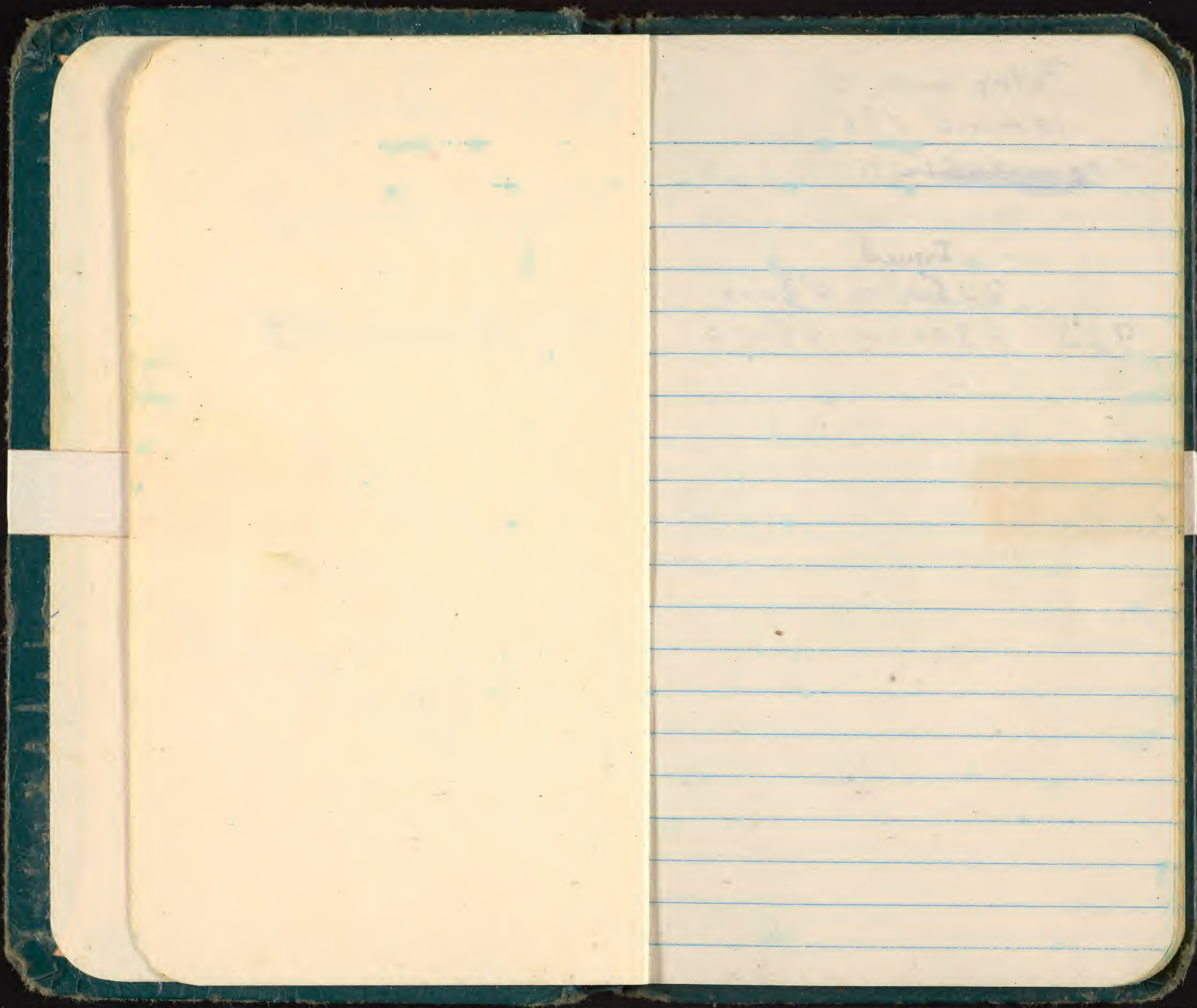
18 R.L. Delong 15-18 March

Robt. L. DeLong

Palmyra Island

15 - 18 March 1967

✓ ADP  
CPTA  
Done 9/4/68



Faint, illegible handwriting on the top portion of the ruled page, possibly including the words "Lined" and "writing paper".

Palmyra

15 March 1967

~~923 31101-~~

Issued

425001 - 43000

923 43001 - 44000

15 March 1967

Used

923 42501 - 800

923 43001 - 43500

Total 800

Issued 16 March 1967

✓  
923 - 39401 - 500

✓ 39501 - 600

✓ 39701 - 39800

✓ 39801 - 39900

✓ 39901 - 40000

Returned

~~16~~  
March

863 96501 - 600

96601 - 700

96701 - 800

96801 - 900

96901 - 97000

Used

~~16~~  
March

issued 17 March 1967

777 - 51259 - 51300

797 - 28501 - 28700

923 31401 - 500 ✓

31201 - 300

31101 - 200

33501 - 600 ✓

33801 - 900 ✓

---

Used 17 March

923 - 31201 - 300 - Sooty w/e

31101 - 200 - Sooty w/e

797 - 28501 - RFB - Ad/w/e

\*777 - 51259 - 271 B.B. Ad.

\*777 ~~51271~~ 51272 - 300 believed  
lost

1 count 23 March 1955

277-21201-300

277-21201-300

277-21201-300

277-21201-300

277-21201-300

277-21201-300

277-21201-300

277-21201-300

277-21201-300

277-21201-300

277-21201-300

\*277-21201-300

277-21201-300

11

Return 15 March 1967

Putnam -

VADP

813	99264	on Egg	✓
813	97405	"	✓
813	96434	"	✓
813	98171	"	✓
813	98802	"	✓
813	96705	"	✓
813	99886	"	✓
813	98076	"	✓
813	98532	"	✓

Returns: 16 March 1967

✓ HDP  
Falcons: Sooty Tern

813 = 96792 ✓

94/981 ✓



✓ADP Return 12 March 8.30pm

813 - 97838 ✓

957 4555BB ✓ AM w/MDY

797-25918RFB A(NT) ✓

797 27547 BB AM w/LOY ✓

797 27616RFB A/w1E ✓

997 27552BB AM w/2E ✓

797 27574 BB AM w/NY ✓

813-94875 - w/e ✓

813 99477 - Noe ✓

~~12 March 1967~~

Brown Booby

Banded

Brown

17 March

777-51259 AM w/EDY

60 Imm

61 AM w/IE

62 AF w/NYEIE

63 AF

64 Imm

~~777-51259 AM w/EDY~~

65 Imm

66 AM w/ZE

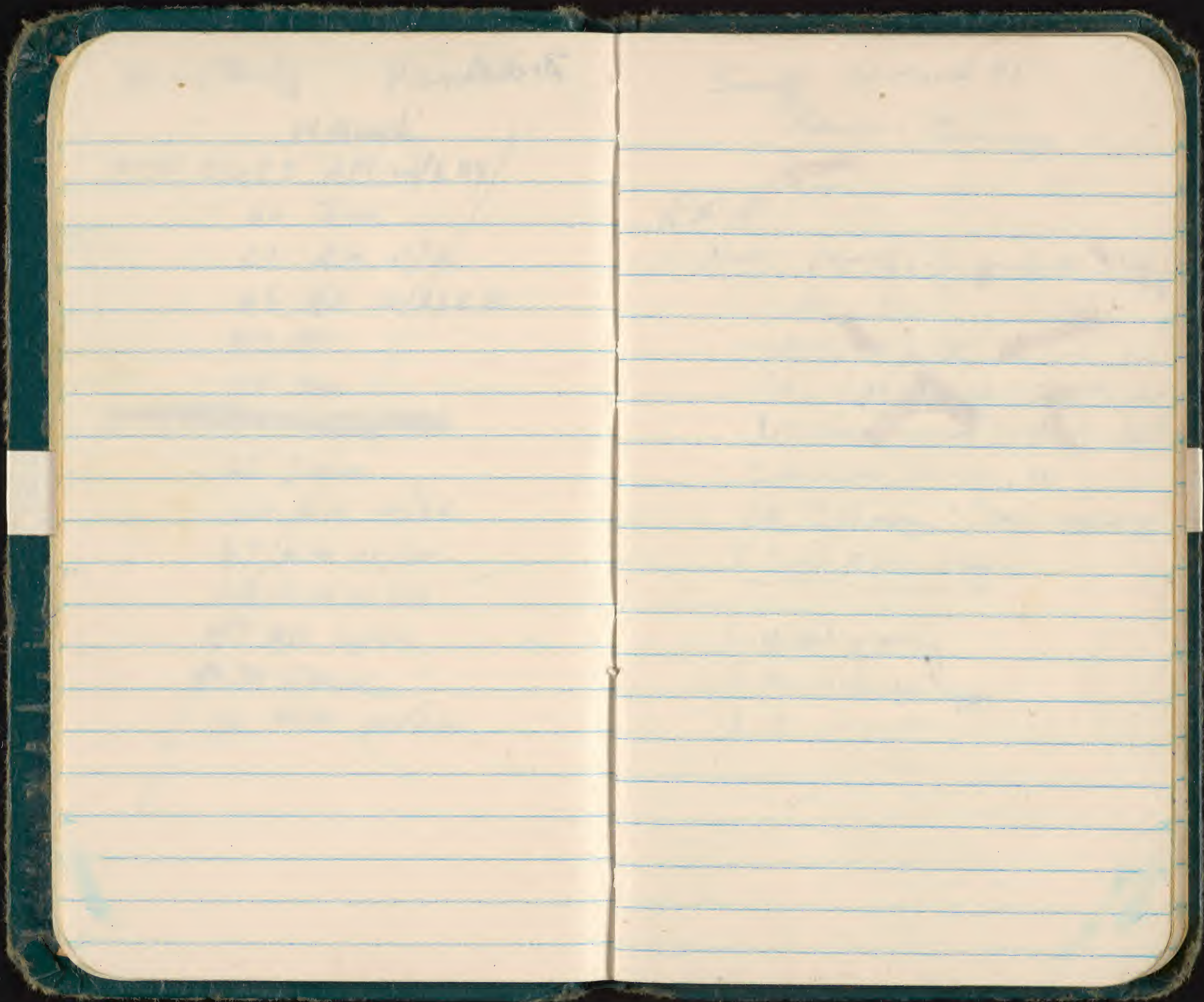
67 AM w/ZE

68 AM w/IE

69 AF w/ZE

70 Imm

71 AM w/ZE



Survey 16 March 1967

Palmyra - Casuarina

RFB -

Nests: 1e - lightly incubated - photos <sup>slightly</sup>

1e -

1e; 1e; 1e; 1e; 1e; 1e

1e; 1; no info; 1e; 1 building nest

1 no info; 1; no info; 1e; 1 ~~no info~~

1 Nest just forming; 1e

1e; (1 no egg) 1e; 1 ad. no egg

1 light phase 1 egg

1 Watched young

1 New nest no egg

1 " " "

Caraway

Br. Booby

- ✓ 1 - small downy chick
- ✓ 1 2e - flock high ✓
- ✓ 1 2e - fresh ✓
- ✓ 1 - ad present - no eggs, no chick
- ✓ 1 - 2e - lightly incubated ✓
- ✓ 1 - 2e - not incubated
- ✓ 1 - 1 naked young
- ✓ 1 - 2e
- ✓ 1 - naked young
- ✓ 1 - 2e mod incubation X
- ✓ 1 - 1e - lightly incubated ✓
- ✓ 1 - New nest; adult present - no eggs
- ✓ 1 " 2 Ad's present "
- ✓ 1 - 2 eggs - mod incubated X
- ✓ 1 - 2 medium downy chicks
- ✓ 1 - 2 eggs highly incubated
- ✓ 1 - 2 eggs fresh ✓
- ✓ 1 - 1 small downy young

- ✓ 1 2 eggs - fresh ✓
- ✓ 1 2 eggs - Well incubated 0
- ✓ 1 2 eggs Mod. incubated X
- ✓ 1 1 large young
- ✓ 1 2 eggs well Inc
- ✓ 1 1 egg " "
- ✓ 1 2 " " "
- ✓ 1 1 naked young
- ✓ 1 1 egg well inc 0
- ✓ 1 2 eggs (1 fresh; 1 lightly inc) ✓
- ✓ 1 1 large downy young
- ✓ 1 1 egg
- ✓ 1 1 immature
- ✓ 1 1e ~~incubated~~ Rotten
- ✓ 1 2 eggs mod incubated X
- ✓ 1 3 eggs - all floated high but no embryos - Rotten
- ✓ 1 1 small downy young
- ✓ 1 1 naked downy young

✓ 1 large downy young

✓ 1 large " "

✓ 1 " " "

✓ 1 small " "

✓ 1 Noded young

✓ 1 2 eggs mod incubated X

✓ 1 small downy young

✓ 1 Noded young; 1 rotten egg

✓ 1 Noded young

✓ 1 2 eggs mod incubated 1 Rotten

✓ 1 egg fresh ✓

5 Pi X Brown Booby Summary  
off Lenny

1 egg  
||||

2 eggs

||||

3 eggs

|

||||

2 Downy young

|

Noded young

||||

Small downy young

||||

Large Downy young

||||

Medium Downy young

|

New Nest

|

1 mature

|

16 March

Islet of Tol. #1

RAB

2 New Nests - No 1-999

3 Nests with eggs

Hawaiian Noddy Colony  
in ~~fruit~~ trees.

Savede

Nest with eggs

III

(3)

Nest with <sup>small</sup> downy young

IIIIIIII

(9)

Nest with ~~Imm.~~

IIII II

(20)

~~Nest with Empty Nest~~

III

(3)

New Nests (forming)

II

(2)

Nest with large downy young (from Sea Colony)

IIIIIIII II

Nest unknown

IIIIIIII

IIIIII

(22)

59

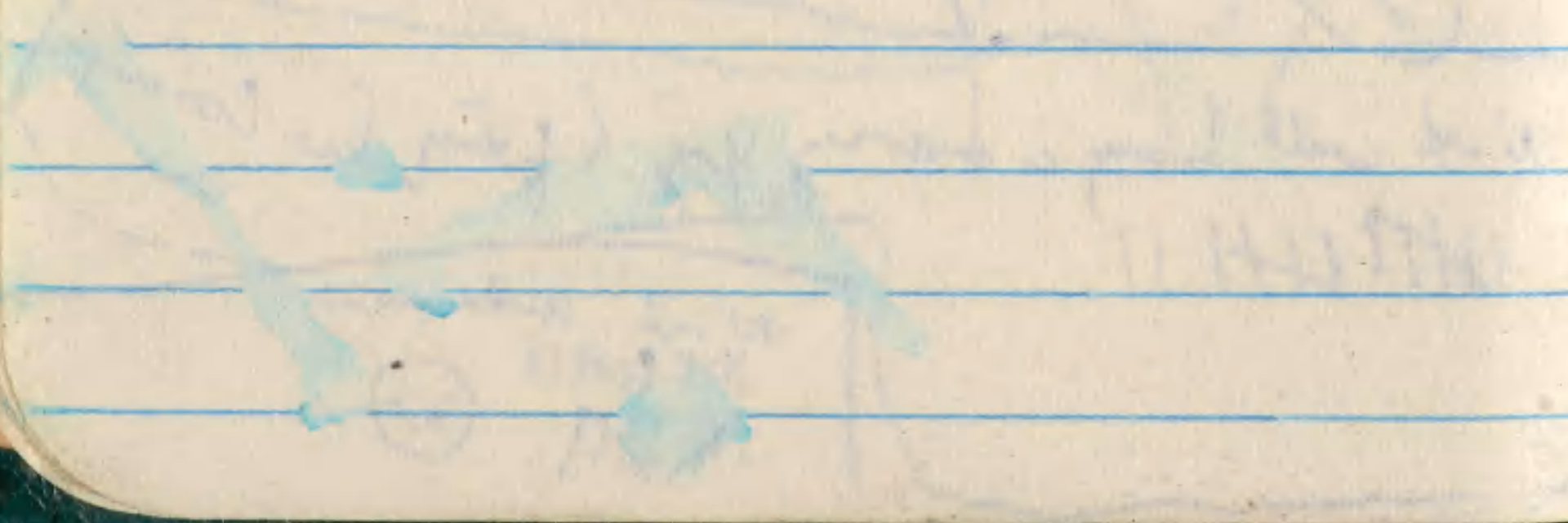
11 June  
3000 ft  
6000 ft

1000 ft  
2000 ft

1000 ft  
2000 ft

1000 ft  
2000 ft

1000 ft  
2000 ft



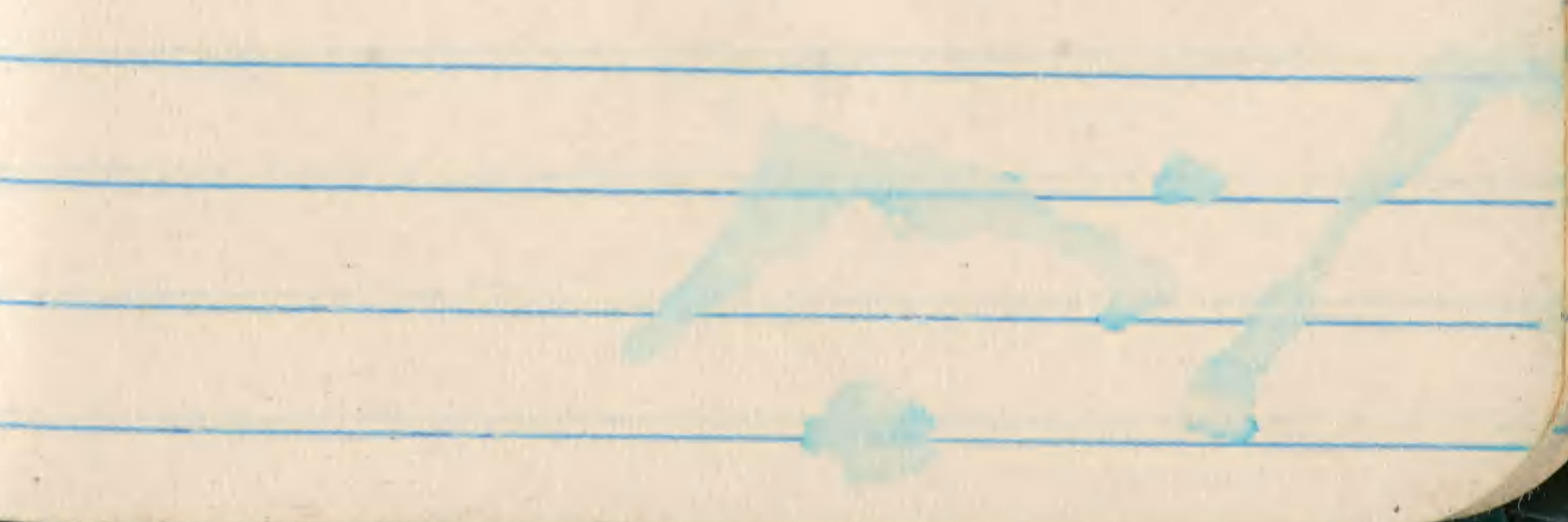
~~11 June~~

1000 ft  
2000 ft

1000 ft  
2000 ft

1000 ft  
2000 ft

1000 ft  
2000 ft





~~Total~~  
~~50~~

BW-

~~47~~ Nests with eggs ~~50~~ 50

Downy nestlings 4

Nests without eggs ~~26~~ 26

Row 1000

1000

1000

Rat forest study 17 March

727 28501 A

~~727~~

Now

Red Lake Bay 17 March

17 March  
18 March  
19 March

Egg - measurement  
Brown Booby - 17 March 1967

Clutch	Length	width
1)	55.0	38.0
2)	61.9	42.8
3)	60.8	39.1
	64.5	41.1
4)	62.2	40.6
5)	59.6	41.5
6)	60.2	44.0
	58.4	42.2
7)	59.4	38.5
	62.2	41.6
8)	57.5	39.6
9)	60.4	38.9
10)	64.7	41.2
	66.3	40.8
11)	61.3	42.1
12)	56.4	39.4
	58.3	40.9
13	59.0	40.0

B B Cont

etch	Length	width
14)	64.3	44.6
	61.0	43.0
15)	58.9	40.3
	58.7	41.6
16)	62.3	40.8
	58.5	38.9
17)	55.8	41.2
18)	61.4	42.0
19)	61.8	41.3
	41.6	57.4
20)	57.4	39.9
	58.1	39.2
21)	61.2	41.0
	62.3	40.4
	57.8	39.8
22)	59.9	40.2
	62.7	40.7
23)	58.3	38.5

B B Cont

	Length	width
24)	62.5	42.5
	59.0	40.7
25)	62.2	41.5
	64.5	42.9
26)	55.8	39.6
27)	62.0	39.3
	61.1	39.8
28)	57.9	39.2
	57.0	40.5

} look  
similar

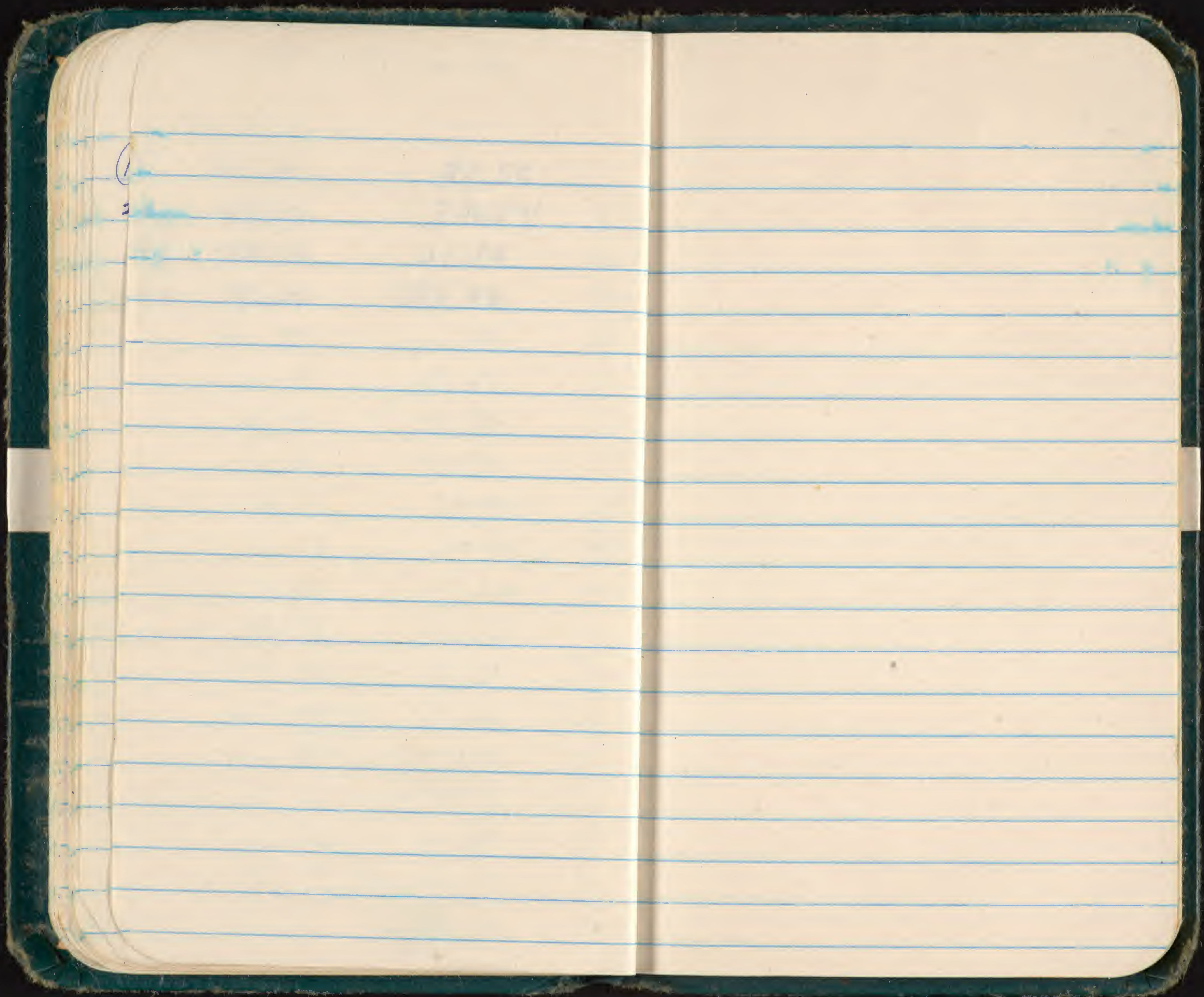
Hawaiian Noddy Tern

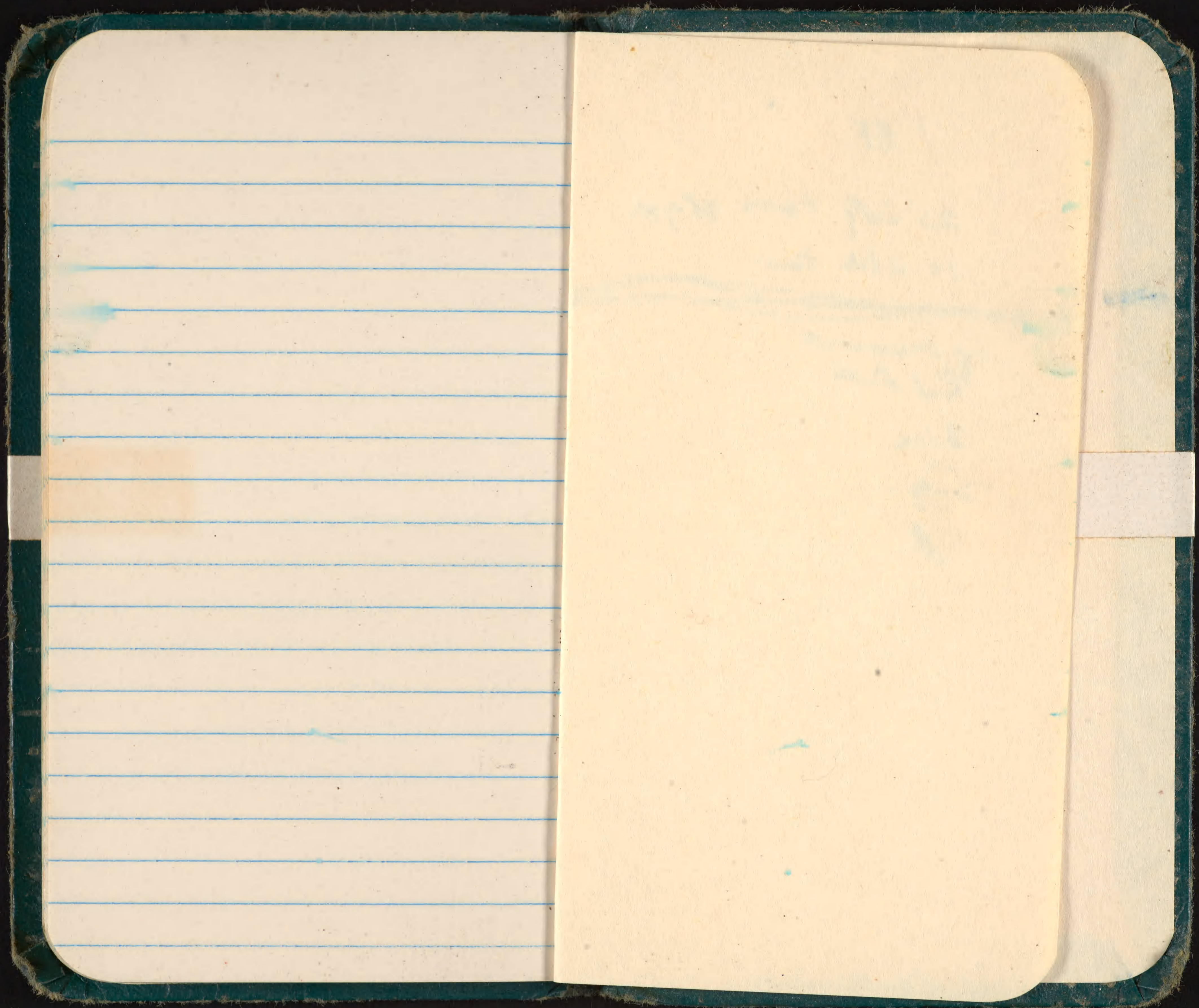
March 17

	L.	W.
(1)	<sup>3</sup> 43.25	31.44
(2)	44.49	32.42
(3)	45.40	30.76
(4)	44.26	32.13
(5)	46.80	31.21
(6)	41.60	30.96
(7)	43.62	31.12
(8)	43.36	31.65
(9)	43.74	31.50
(10)	41.20	28.11
(11)	41.72	29.80
(12)	45.80	31.24
(13)	44.21	31.24
(14)	44.81	31.20
(15)	44.04	31.30
(16)	44.81	29.89
(17)	43.25	31.05
(18)	45.90	31.10

(19) 45.70 32.55  
20) 44.90 30.54  
21) 44.40 31.10  
22 42.67 30.90







7 AF

25 Sooty terns off eggs.

10 white tern

---

Egg measurements

Red Foots

Black

Sooty -

BB

**7530-222-0078**  
**FEDERAL SUPPLY SERVICE**

GPO c43-16-73124-2